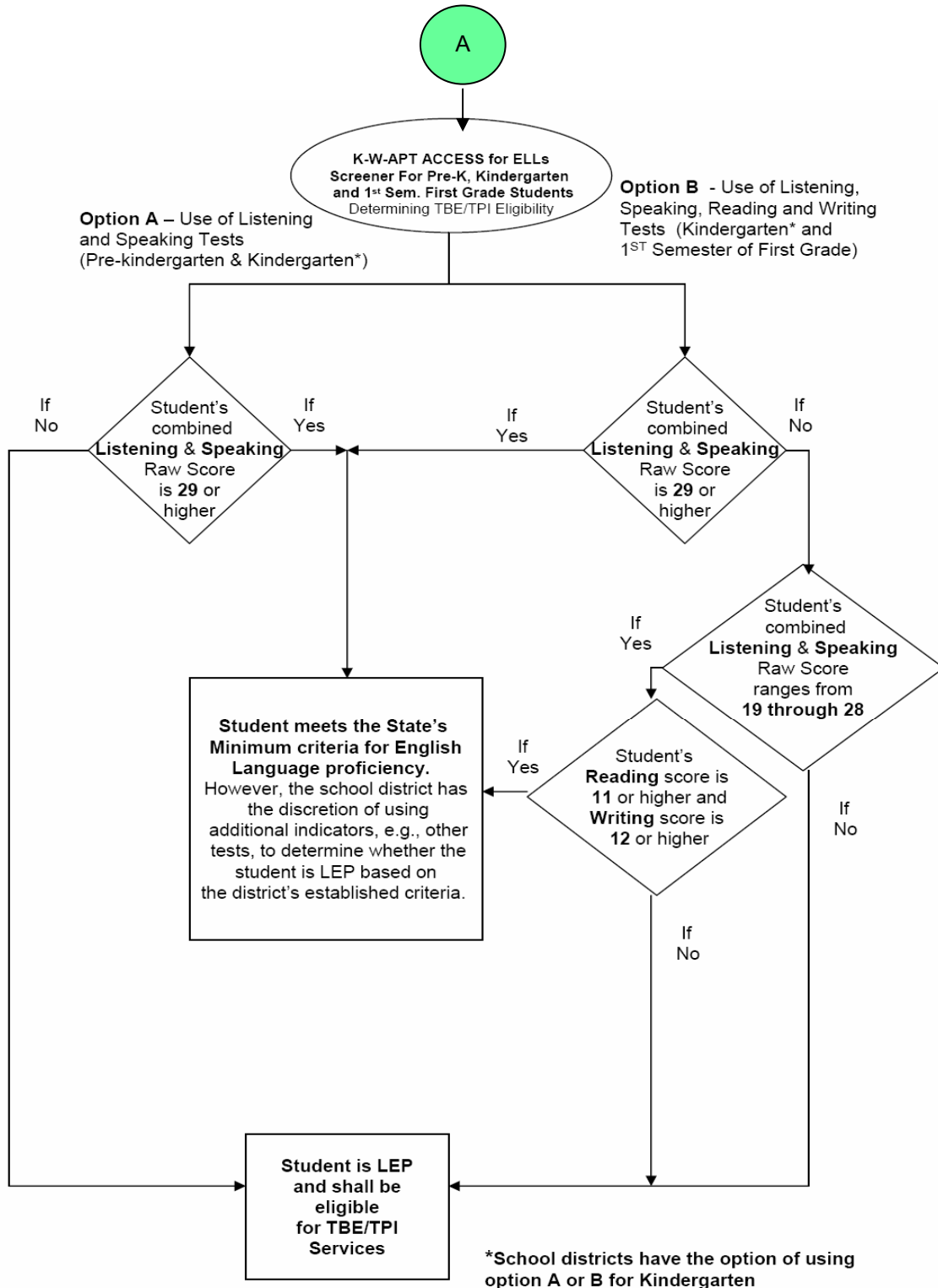
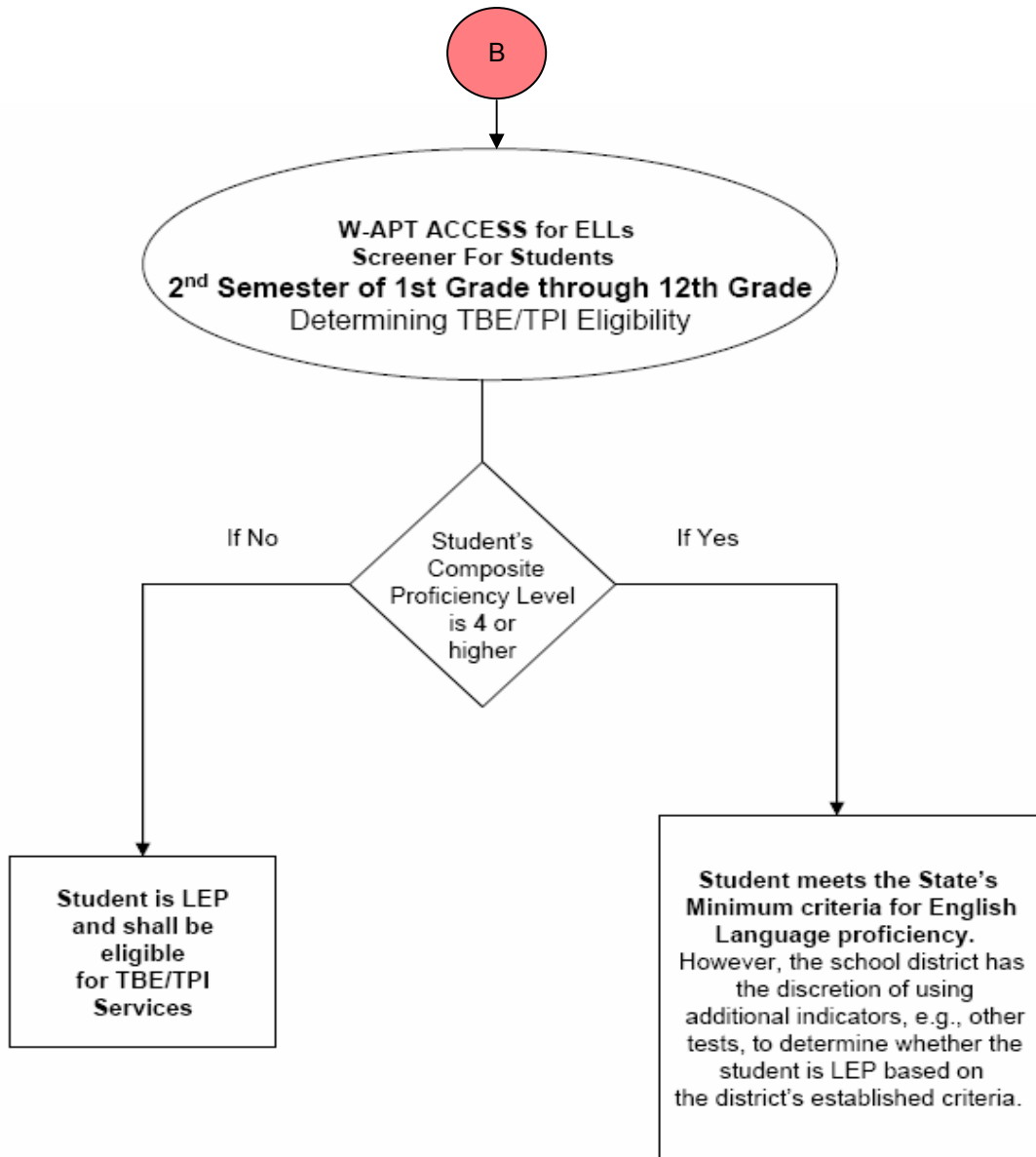
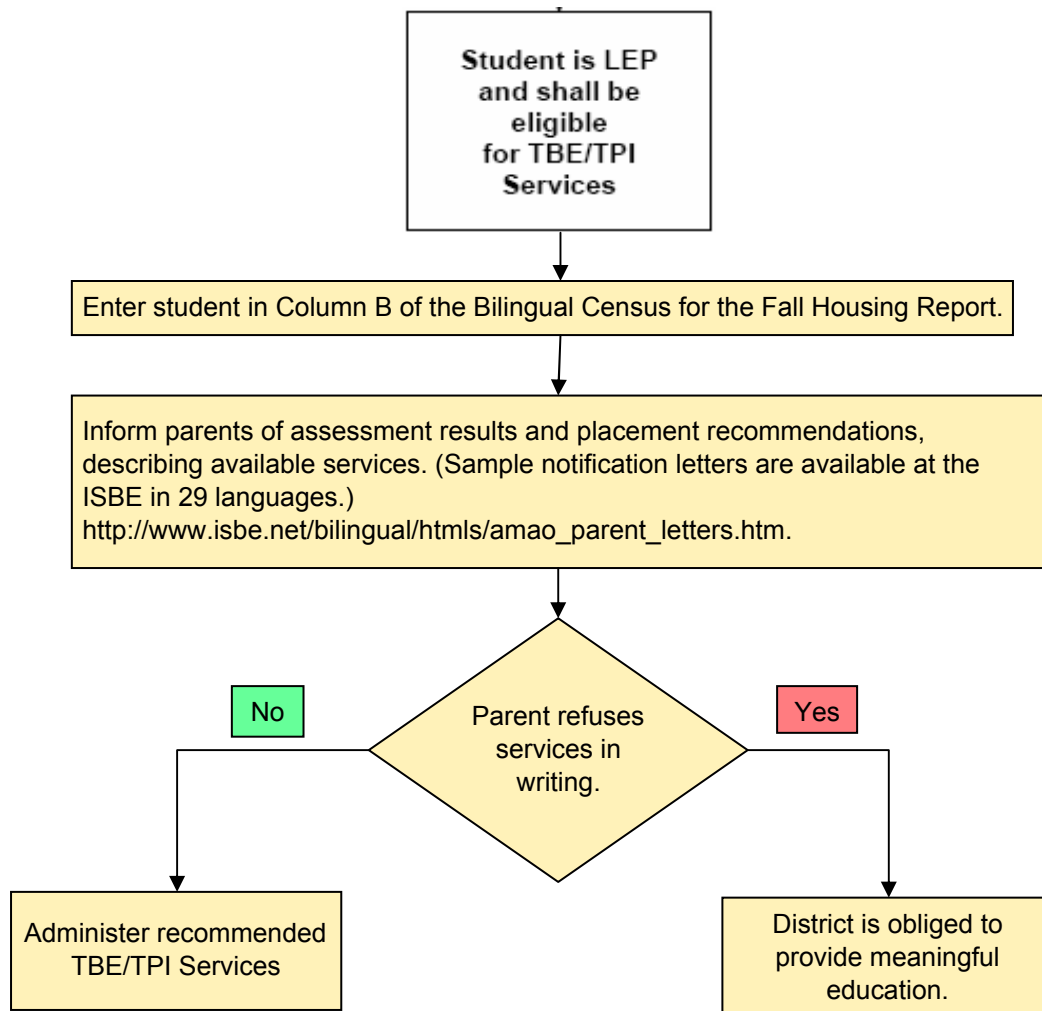


NOTE: There is a 30 day time limit from the date of registration until the administration of the ELL Screener.







Student is LEP "forever". If the student exits from LEP, his/her scores will be included in the LEP subgroup only if the school has more than 44 LEPs as a subgroup.

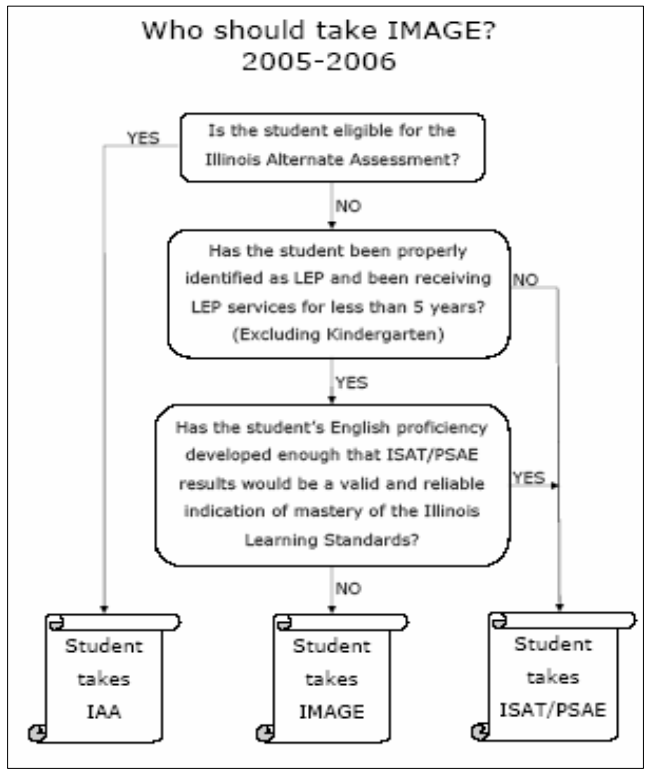
Jan. 16 - Feb 7, 2007
Administer ACCESS

Composite Score ≥ 4

Student is English Proficient.

Continue to administer ACCESS annually until student achieves a Composite Score ≥ 4 .

Note: The IMAGE Flowchart is for the 2005-2006 school year. The ISBE has not published a Flowchart for 2007-2008 as of Nov. 30, 2006.



About This Flowchart

West 40 Intermediate Service Center No. 2 developed this flowchart to assist districts with the enrollment of students who may be English Language Learners. It shows the steps and the order in which to take them. Upon completing them, the district will be able to determine whether or not a student is eligible for TBE/TPI services and should be included in the Fall Housing Report's Bilingual Census, Column B.

The chart includes sections which West 40 prepared as well as flowcharts which the Illinois State Board of Education developed. West 40 based all information in the flowchart on that available at the Illinois State Board of Education's English Language Learners' (<http://www.isbe.net/bilingual>) and Student Assessment websites (http://www.isbe.net/assessment/htmls/image_participation_06.htm).

The ISBE continues to improve their charts. This document reflects the latest available information and charts as of November 30, 2006.

(W-APT) WIDA ACCESS PLACEMENT TEST

http://www.isbe.net/bilingual/pdfs/WIDA_placement.pdf

The ISBE's flowchart for Pre-K, Kindergarten, and First Semester First Grade enrollees.

http://www.isbe.net/bilingual/pdfs/kindergarten_w-apt.pdf

The ISBE's flowchart for Second Semester First Grade through Twelfth Grade enrollees.

http://www.isbe.net/bilingual/pdfs/Grades1-12_W-APT.pdf

The ISBE's flowchart for determining whether or not a specific student should take the IMAGE.

http://www.isbe.net/assessment/pdfs/image_flow_chart.pdf

(WIDA) World-class Instructional Design and Assessment

<http://www.wida.us/>

(HLS) Home Language Survey and TBE/TPI Parent Notification Letters

http://www.isbe.net/bilingual/htmls/tbe_tpi.htm

(TBE) Transitional Bilingual Education

(TPI) Transitional Program of Instruction

(LEP) Limited English Proficient

(ELL) English Language Learner

(AMAO) Annual Measurable Achievement Objectives